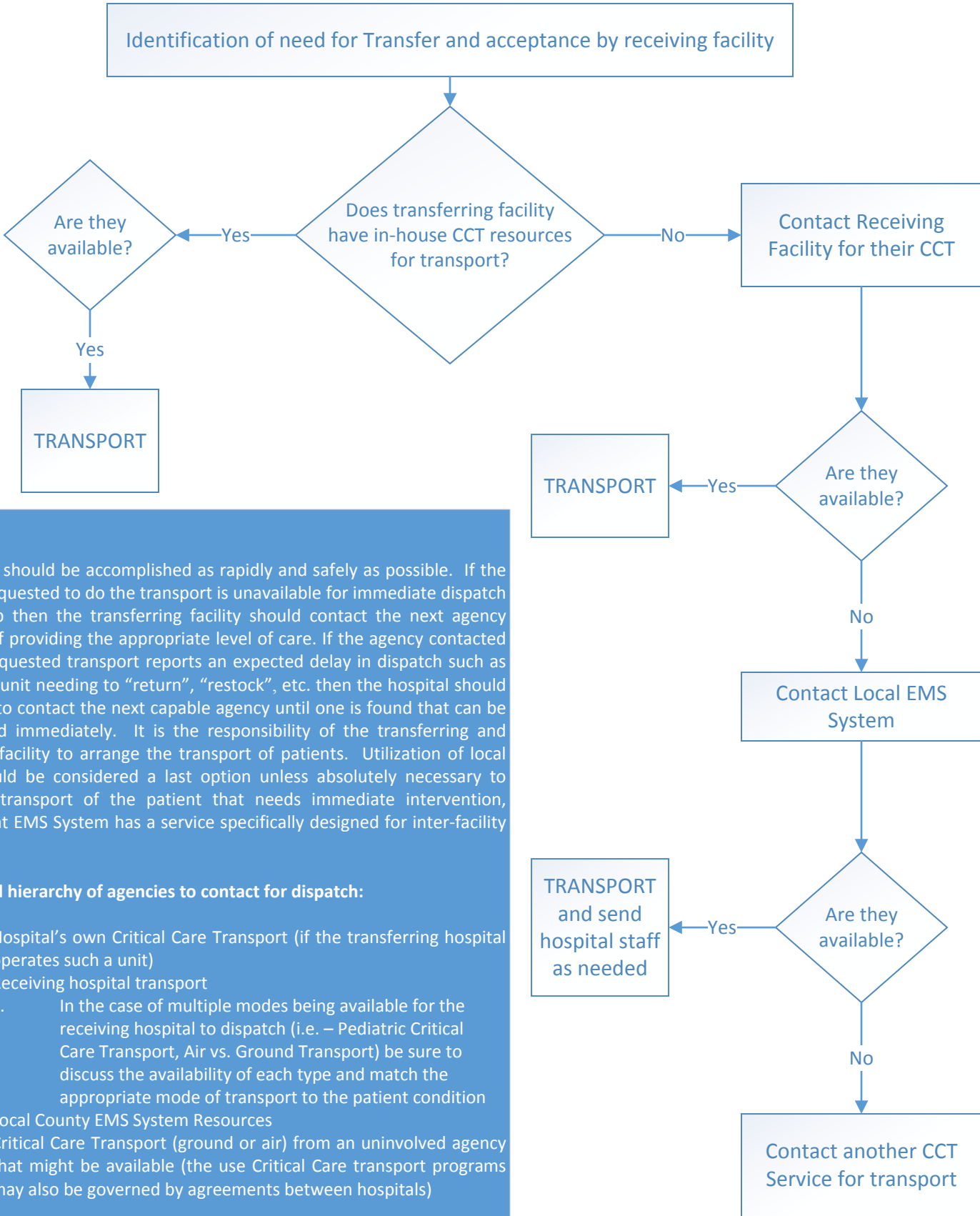


Transport or Transfer of CCT Patient



PEARLS

Transport should be accomplished as rapidly and safely as possible. If the agency requested to do the transport is unavailable for immediate dispatch for pickup then the transferring facility should contact the next agency capable of providing the appropriate level of care. If the agency contacted for the requested transport reports an expected delay in dispatch such as transport unit needing to “return”, “restock”, etc. then the hospital should continue to contact the next capable agency until one is found that can be dispatched immediately. It is the responsibility of the transferring and receiving facility to arrange the transport of patients. Utilization of local EMS should be considered a last option unless absolutely necessary to facilitate transport of the patient that needs immediate intervention, unless that EMS System has a service specifically designed for inter-facility transfer.

Suggested hierarchy of agencies to contact for dispatch:

1. Hospital’s own Critical Care Transport (if the transferring hospital operates such a unit)
2. Receiving hospital transport
 - a. In the case of multiple modes being available for the receiving hospital to dispatch (i.e. – Pediatric Critical Care Transport, Air vs. Ground Transport) be sure to discuss the availability of each type and match the appropriate mode of transport to the patient condition
3. Local County EMS System Resources
4. Critical Care Transport (ground or air) from an uninvolved agency that might be available (the use Critical Care transport programs may also be governed by agreements between hospitals)

*** Important Note:** If delay is unavoidable then it is essential to contact the receiving facilities physician and discuss the potential need for beginning diagnostics and/or therapy.